

Aluminium ACCORDION SHUTTERS

**OFFERS ANOTHER LEVEL OF
HURRICANE PROTECTION FOR
YOUR HOME!**



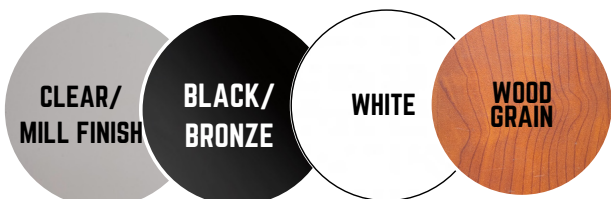
Hurricane Season commences on June 1st and runs through November 30th. It is important to plan ahead so that you and your family are safe in an emergency.

Add another level of protection to your home with our quick and easy to install Aluminium Hurricane Shutters.



- **MADE WITH DURABLE ALUMINIUM EXTRUSIONS.**
- **MADE WITH PREDRILLED ASSEMBLY HOLES WHICH MAKES IT VERY EASY TO INSTALL.**
- **WITHSTAND HURRICANE FORCE WINDS.**
- **ELIMINATE WALL DAMAGE CAUSED BY NAILING.**
- **WHOLE SYSTEM REMAIN IN PLACE TO BE REUSED SEASON AFTER SEASON.**
- **SHUTTERS ALSO ADD A TOUCH OF BEAUTY YEAR ROUND.**
- **CAN ALSO BE USED AS SHADE FROM THE SUN IN THE HOT MONTHS.**

AVAILABLE IN A VARIETY OF FINISHES

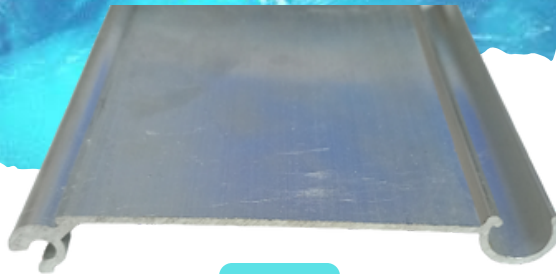


Aluminium ACCORDION SHUTTERS

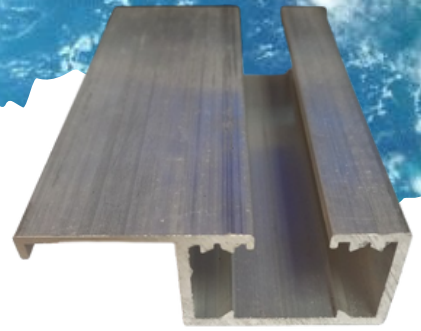
EXTRUSIONS



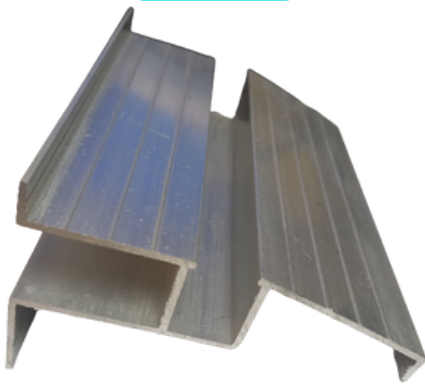
**BUILT OUT ANGLE
SC 348**



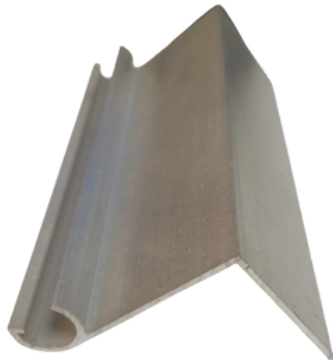
**BLADE
SC 350**



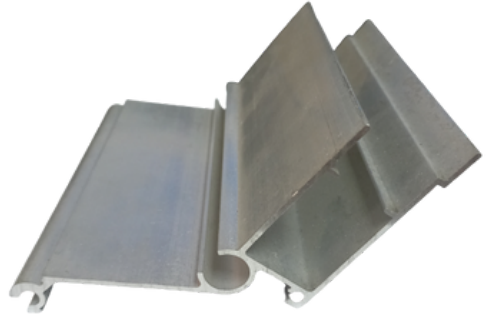
**CEILING HEADER
SC 352**



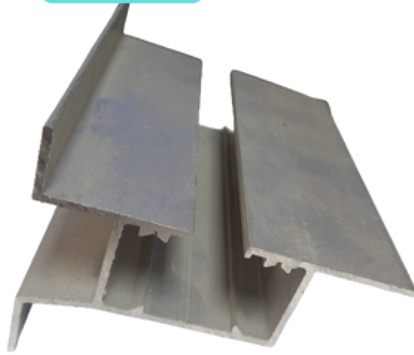
**BUILT OUT
2 LEG WALL SILL
SC 353**



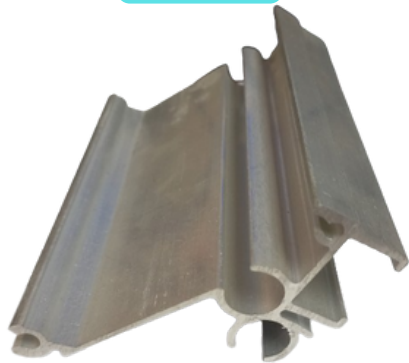
**WALL STARTER
SC 354**



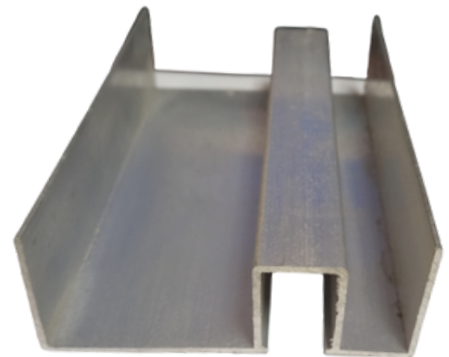
**FEMALE
T LOCK
SC 355**



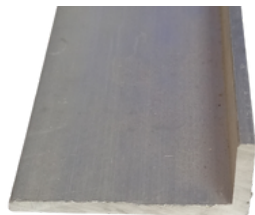
**BUILT OUT
CEILING HEADER
SC 356**



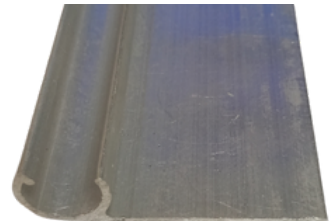
**MALE
T LOCK
SC 357**



**TRACK SILL
SC 358**



**ANGLE
HB 90**



**FLAT STARTER
SC 349**

AVAILABLE IN A VARIETY OF FINISHES



Aluminium ACCORDION SHUTTERS

ACCESSORIES



**CARRIAGE
WHEEL**



LOCK



**TRACK ROLLER
GUIDE PIN**



**LOCKING
PIN**



**LOCK
ACCESSORY**



**LOCK
ACCESSORY**



**RECESSED
NYLON
BUSHING**

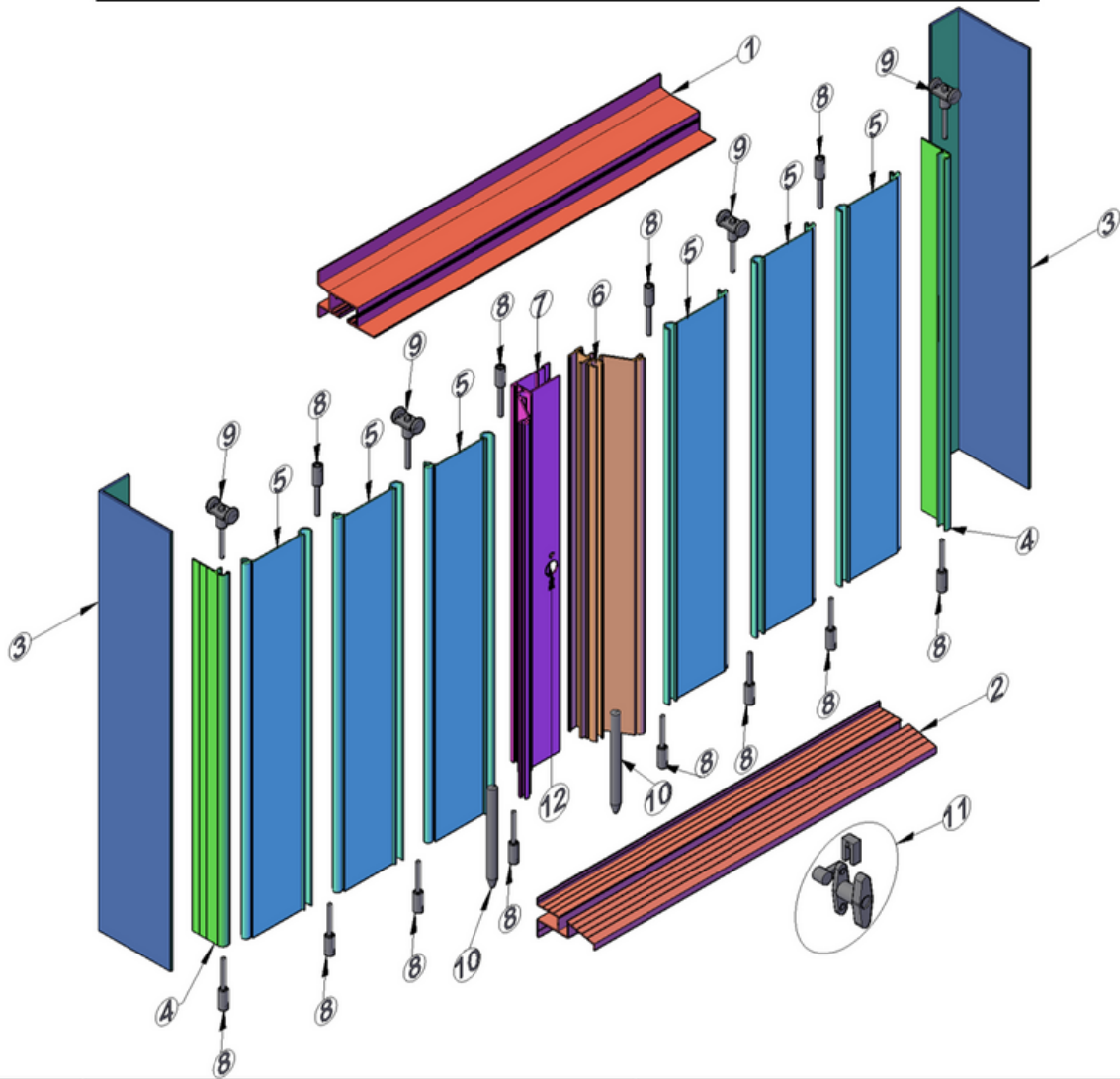


**DRYWALL
SCREWS**

Aluminium ACCORDION SHUTTERS

EXPLODED ASSEMBLY

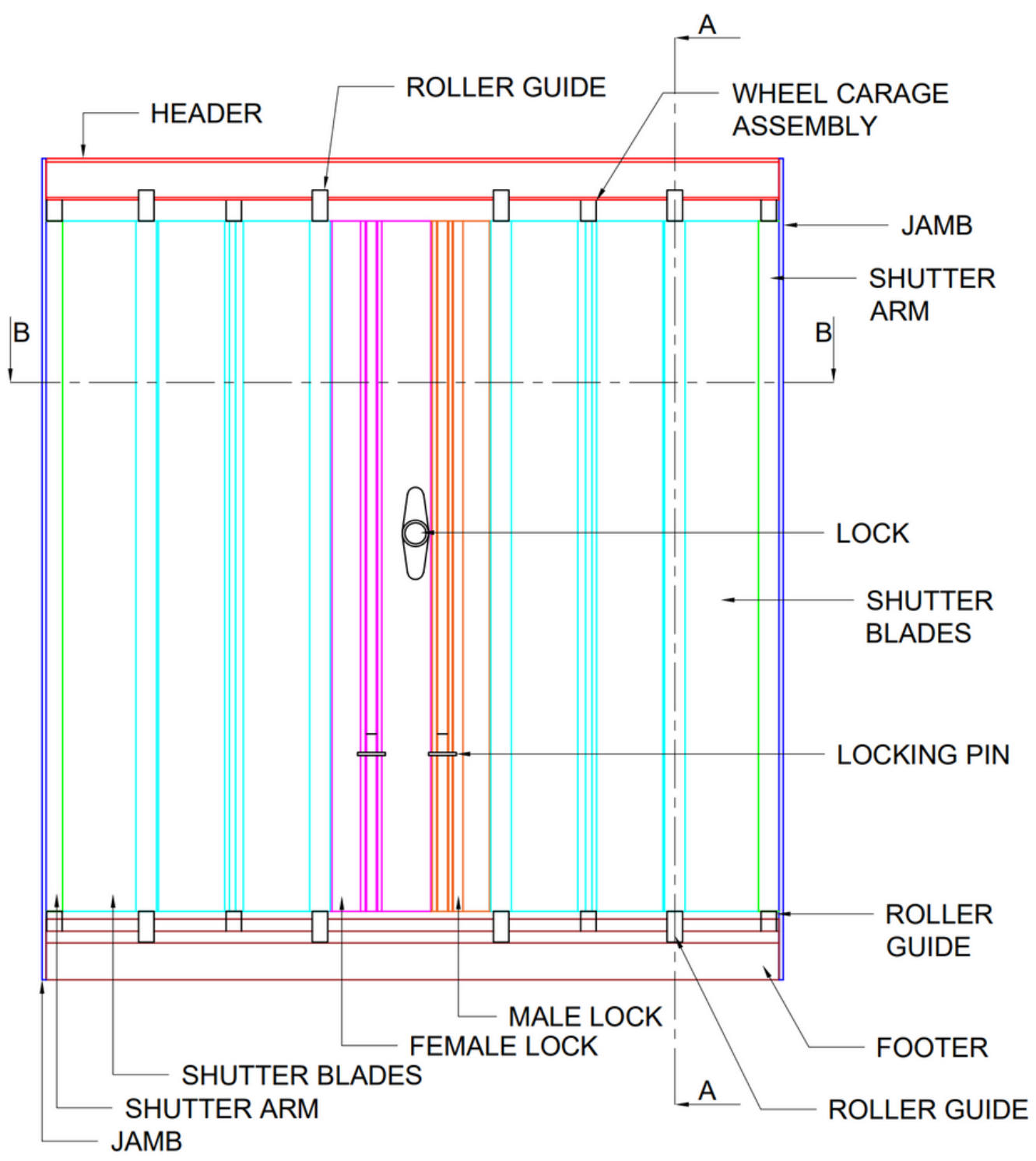
ACCORDIAN SHUTTER OUTBUILT – ASSEMBLY DRAWING – 3D



NO.	COMPONENT	DIE NO.
1	Header	SC 356
2	Footer	SC 353
3	Jamb	SC 348
4	Shutter Arm	SC 349
5	Shutter Blade	SC 350
6	Male Lock	SC 357
7	Female Lock	SC 355
8	Roller Guide	
9	Wheel Carriage Assembly	
10	Locking Pins	
11	T-Handle Lock Kit	
12	Lock Holes	

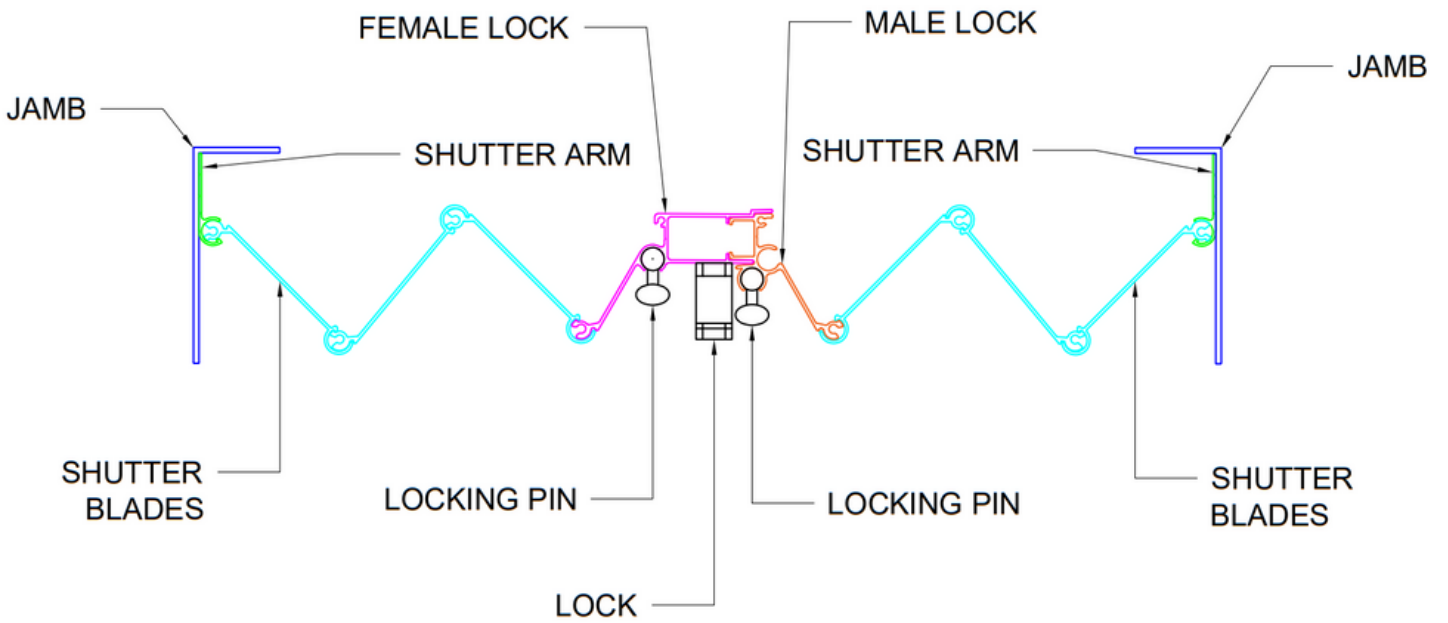
Aluminium ACCORDION SHUTTERS

FRONT ELEVATION



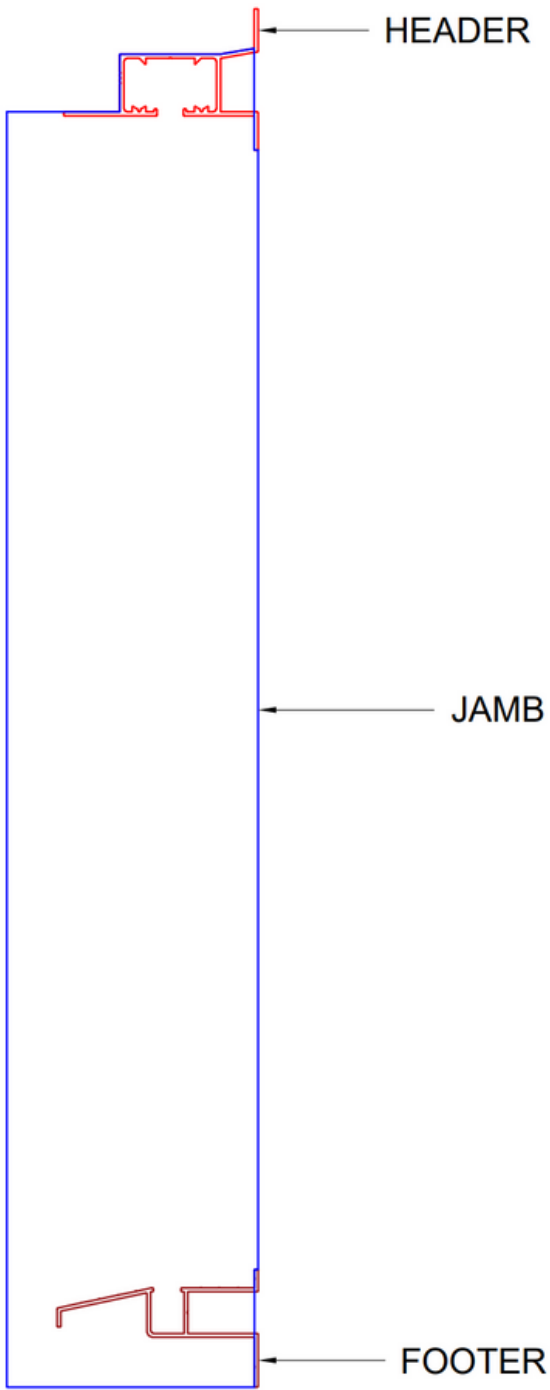
Aluminium ACCORDION SHUTTERS

TOP VIEW SECTION



Aluminium ACCORDION SHUTTERS

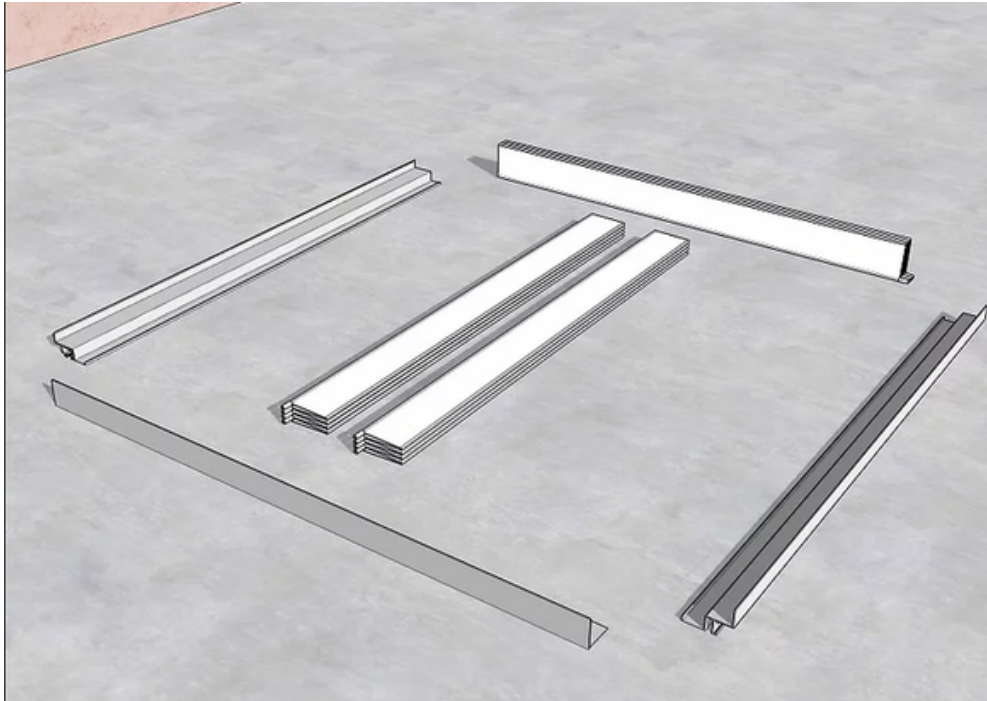
SIDE VIEW SECTION



Aluminium ACCORDION SHUTTERS

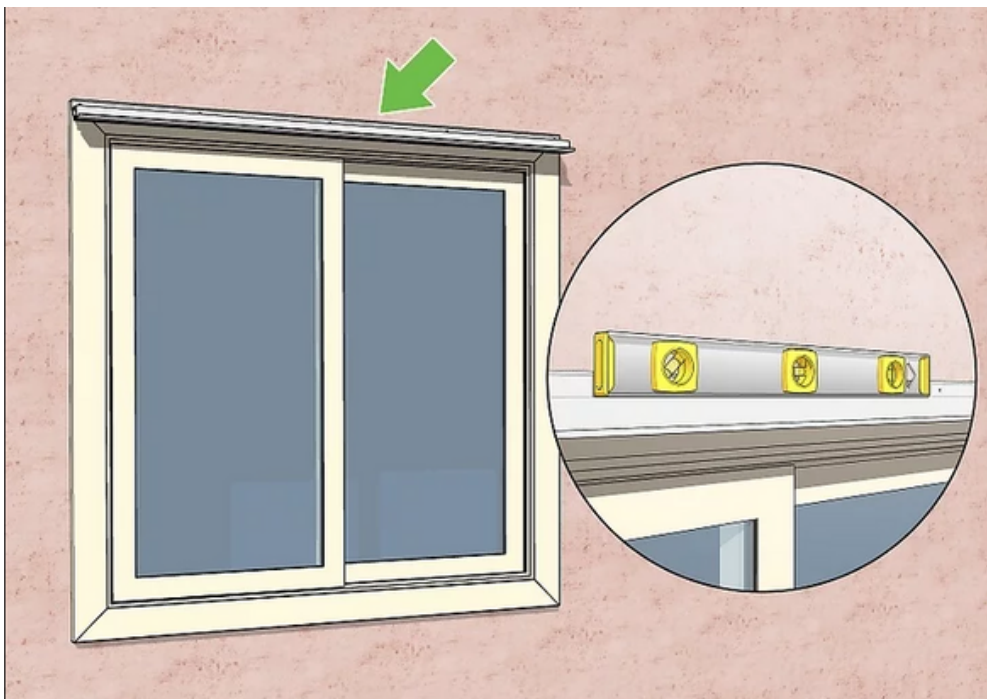
INSTALLATION

1.



PULL OUT THE PARTS AND LAY THEM OUT ON YOUR DRIVEWAY OR LAWN NEAR THE WINDOW THEY WILL BE PROTECTING. EACH PART SHOULD COME NUMBERED AND PRE-DRILLED.

2.

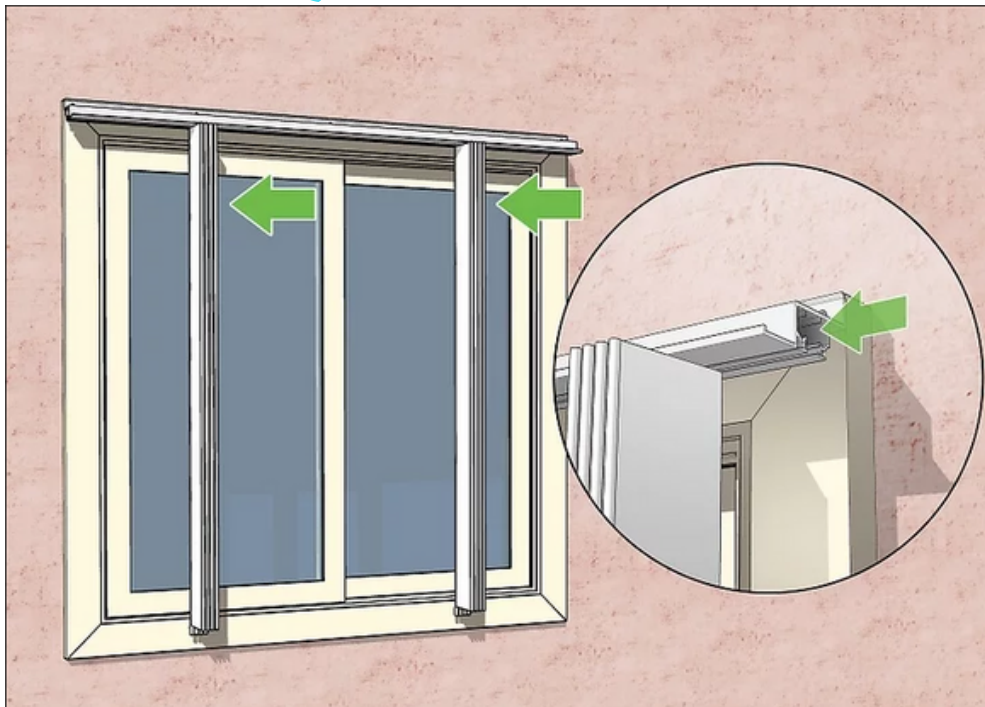


PLACE THE TOP TRACK ABOVE THE TOP OF THE WINDOW. LEVEL AND MARK YOUR WALL TO LINE UP WITH THE PRE-DRILLED HOLE(S).

Aluminium ACCORDION SHUTTERS

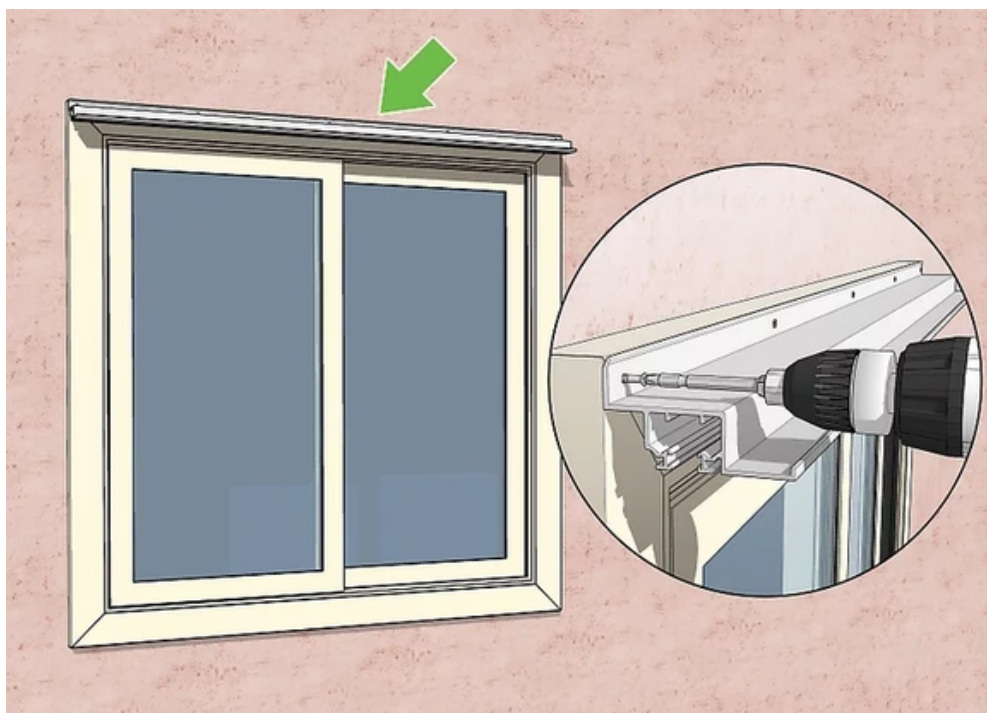
INSTALLATION

3.



ATTACH THE HEADER WITH 2.25-INCH CONCRETE ANCHORS AND SCREWS. THE ENDS OF THESE SCREWS SHOULD REMAIN OUT UNTIL THE SIDES ARE PUT ON. MAKE SURE THE TRACK IS LEVEL.

4.

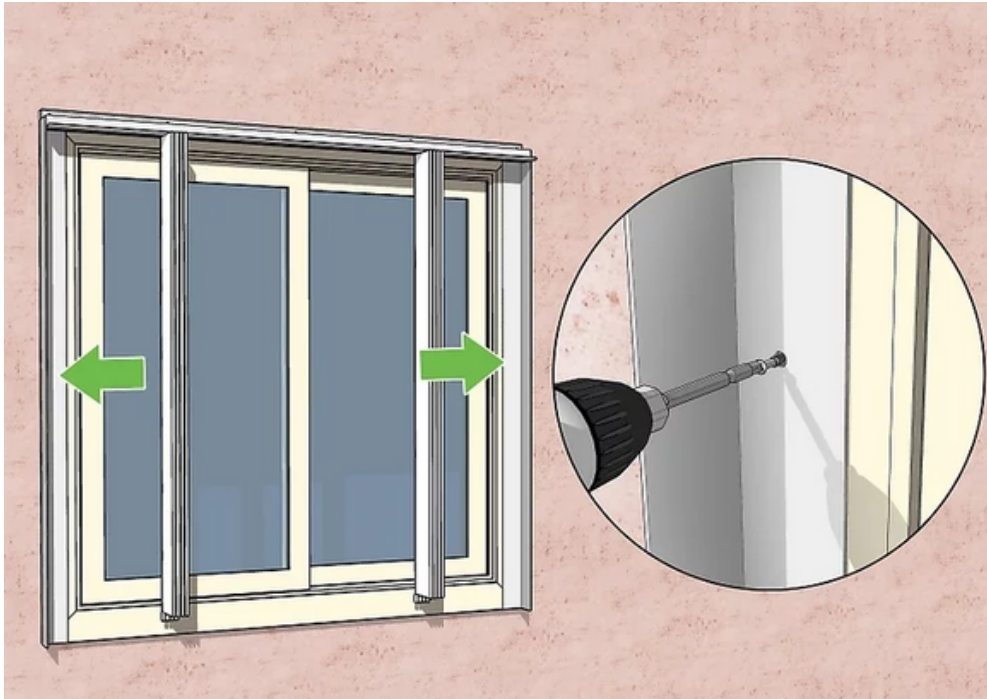


POSITION THE LEFT AND RIGHT SHUTTER INTO THE HEADER CHANNEL TRACK. ADJUST THE SHUTTERS AS NEEDED SO THEY ARE AWAY FROM THE EDGES. EACH SHUTTER ASSEMBLY SHOULD BE MARKED LEFT OR RIGHT.

Aluminium ACCORDION SHUTTERS

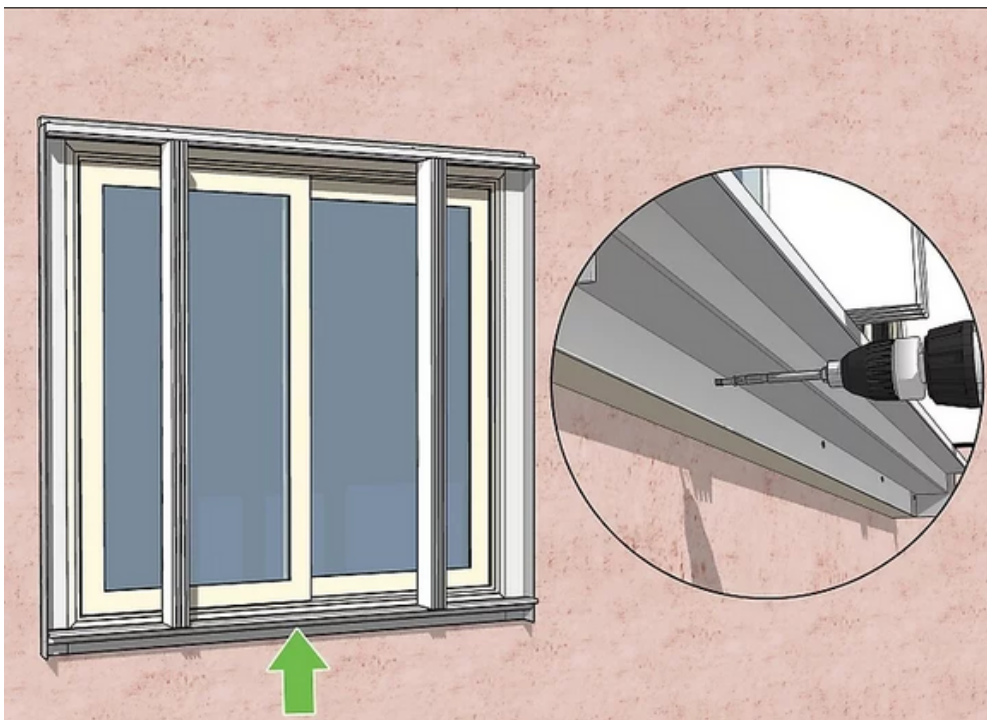
INSTALLATION

5.



ATTACH ONE SIDE PANEL WITH 2.25-INCH CONCRETE ANCHORS AND SCREWS. CHECK THAT THE PANEL IS STRAIGHT AND FLUSH WITH THE TOP PIECE. THE SMALLER PART OF THE SIDE PANEL SHOULD FACE INWARD TOWARD THE WINDOW.

6.

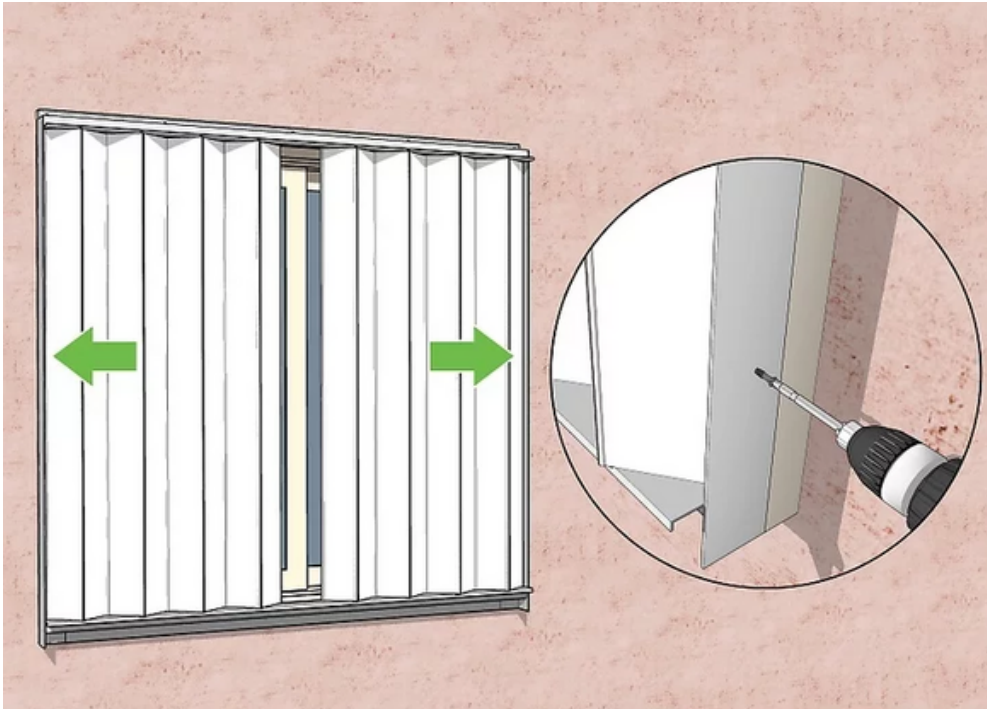


FASTEN THE BOTTOM PANEL WITH THE SAME-SIZED CONCRETE ANCHORS AND SCREWS. INSERT THE BUSHINGS AT THE BACK OF THE CURTAINS INTO THE GROOVES ON THE BOTTOM TRACK.

Aluminium ACCORDION SHUTTERS

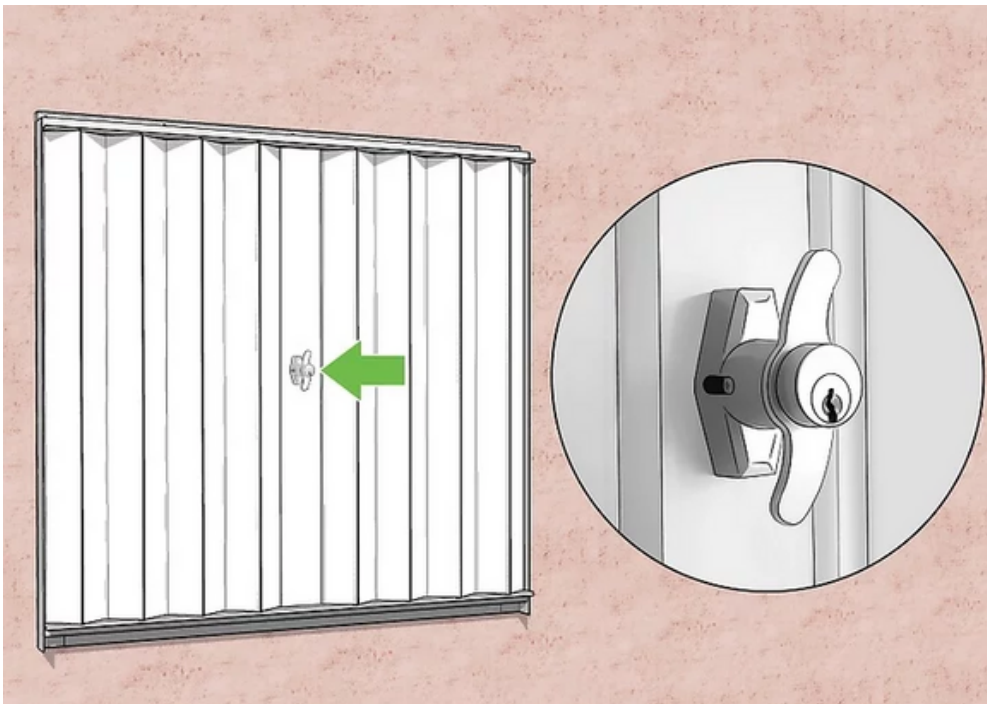
INSTALLATION

7.



AFFIX THE START STRIPS OF THE CURTAINS TO THE SIDE PANELS WITH THE SCREWS PROVIDED.

8.

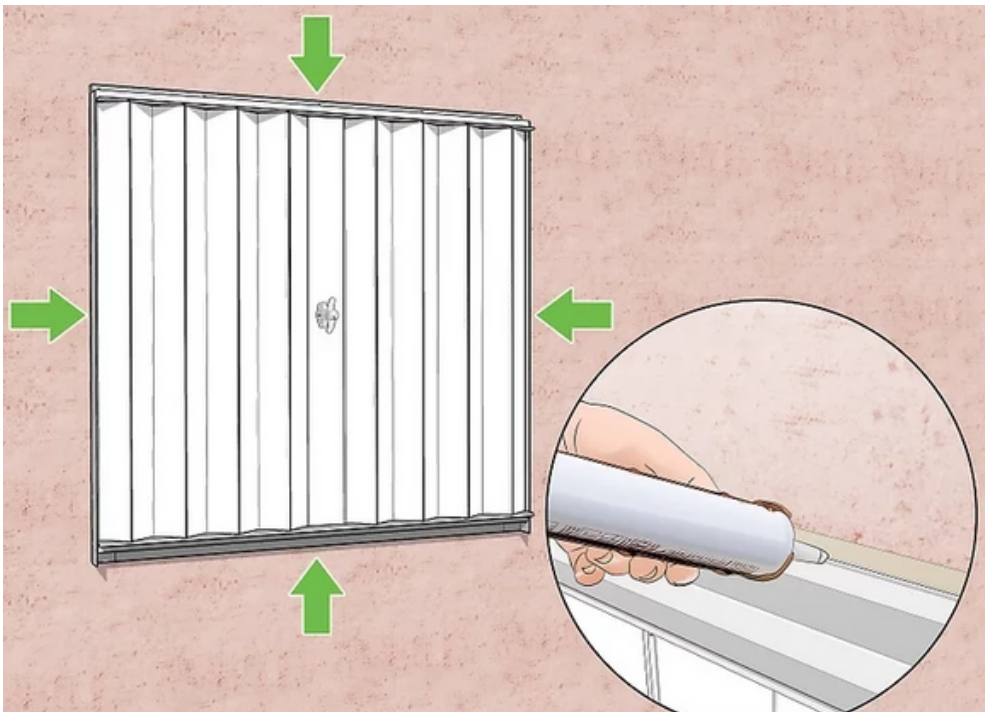


CHECK THAT THE SIDES OF THE ACCORDION CLOSE AND LOCK PROPERLY.

Aluminium ACCORDION SHUTTERS

INSTALLATION

9.



CAULK AROUND THE SIDES OF YOUR ACCORDION SHUTTERS, IF DESIRED.